

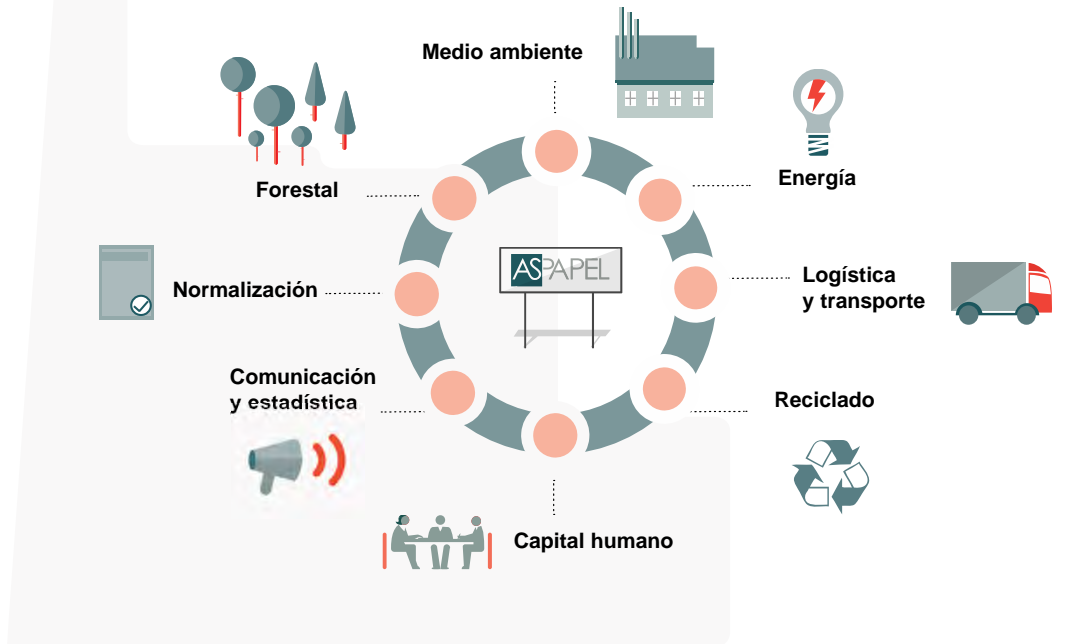
# ASPAPPEL

INGEDE SYMPOSIUM  
12 FEB 2014

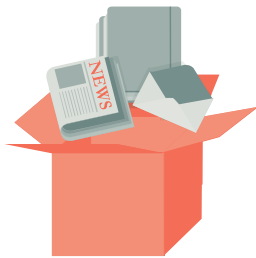
ASPAPPEL  
Asociación Española de Fabricantes  
de Pasta, Papel y Cartón

Agrupación a las empresas  
fabricantes de celulosa  
y papel en España ↓ **96%**  
de la producción del sector





2012



**Consumo**

**6,2 millones** de toneladas de papel  
**1,8 millones** de toneladas de celulosa



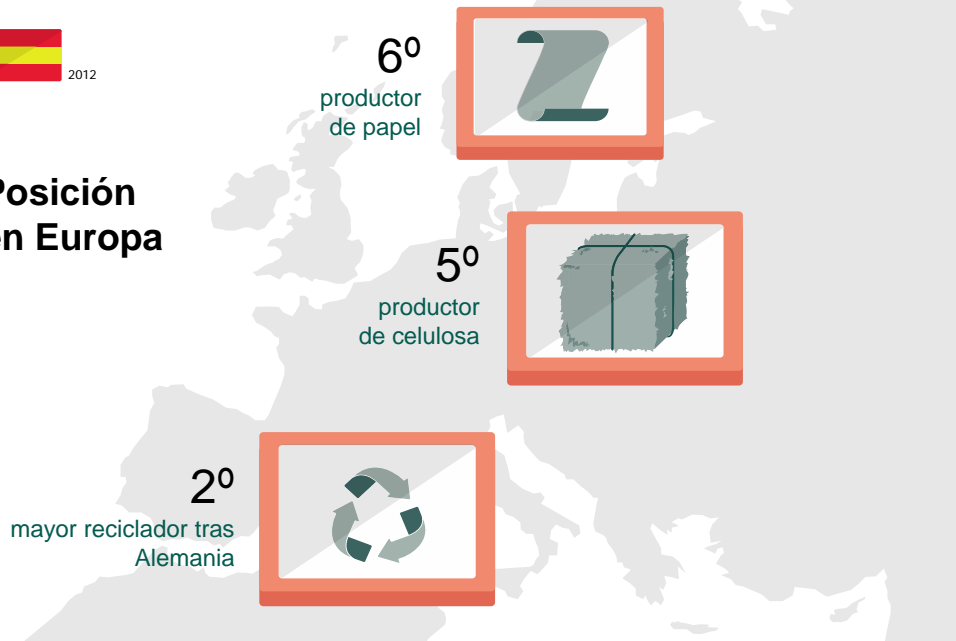
**Producción**

**6,2 millones** de toneladas de papel  
**2 millones** de toneladas de celulosa

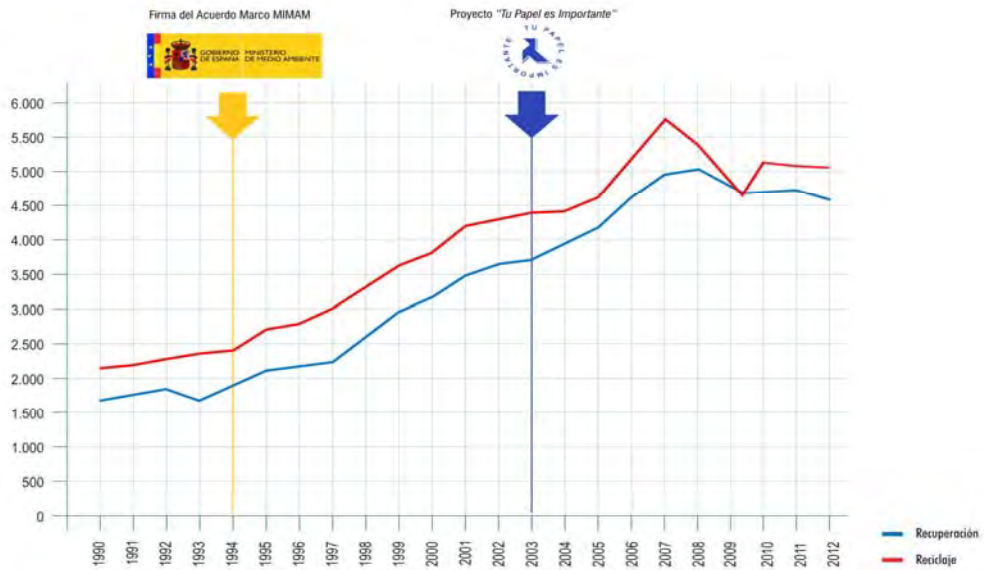


2012

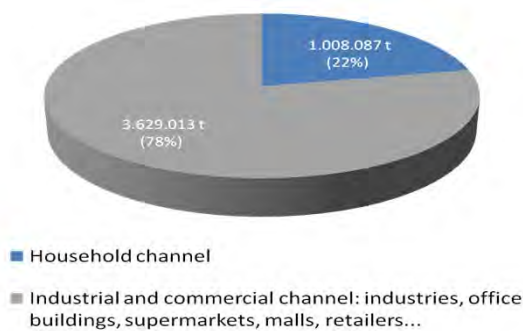
## Posición en Europa



- WHY IS ASPAPEL PROMOTING SEPARATE COLLECTION: TU PAPEL ES IMPORTANTE.
- HOW DOES SEPARATE COLLECTION WORK IN SPAIN.
- LEGAL ASPECTS OF THE SPANISH COLLECTION.



Total P&B collected in 2012 = 4.637.100 tonnes



**Household collection** — Responsibility of local authorities

Industrial and commercial collection — Private management

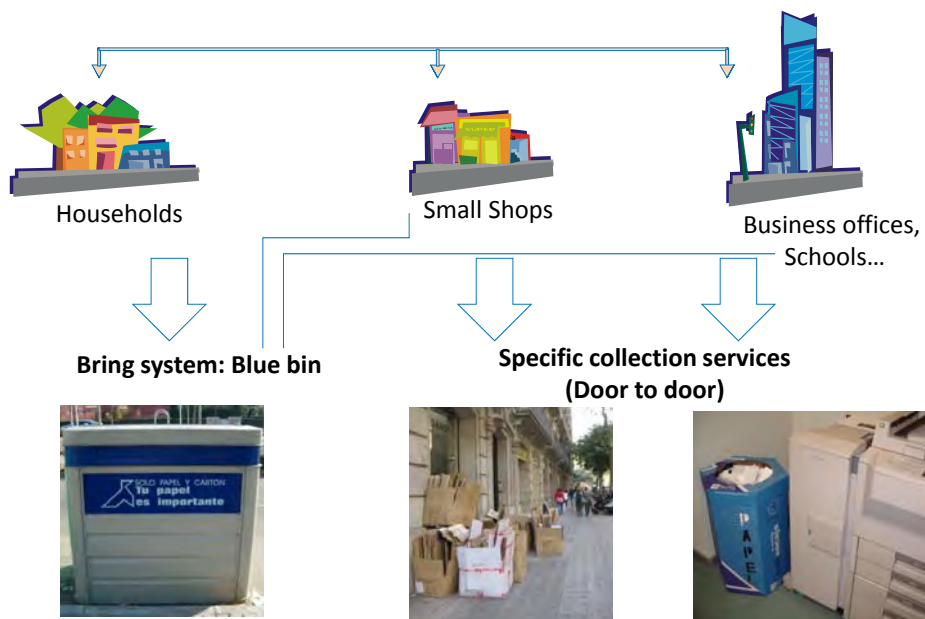
- Only for households. Sometimes, small shops allowed
- Bring area containers for 4 types of waste (5<sup>th</sup> type under development)

Blue: ONLY Paper & Board

Yellow: Beverage cartons, plastic & metal packaging

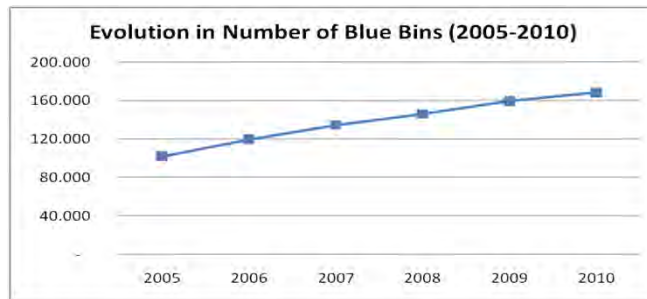
Green: Glass bottles

Grey/brown: Biowaste + mixed waste

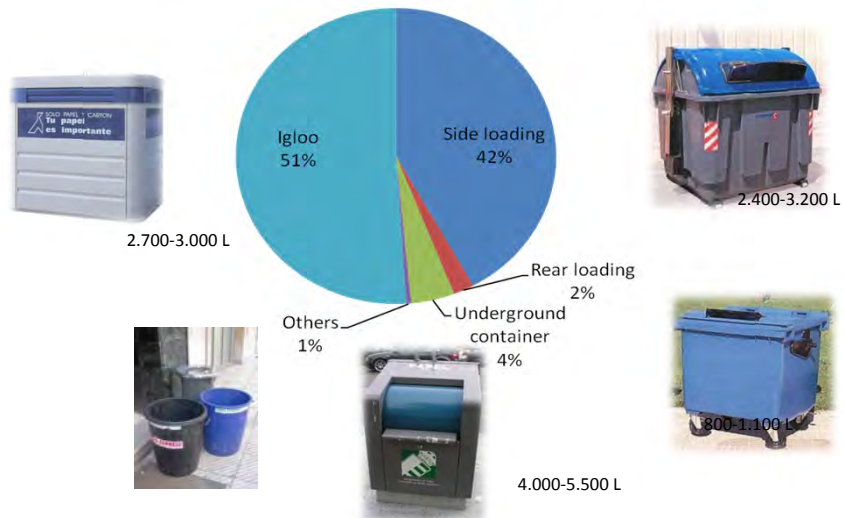




- Blue is the official color
- 100% of population covered (45 million)
- Permitted materials: Newspapers, magazines and graphic paper (60% by weight) and P&B packaging (40% by weight)
- More than 170.000 blue bins
- Average rate: 280 inhab/bin. Depending on population density.



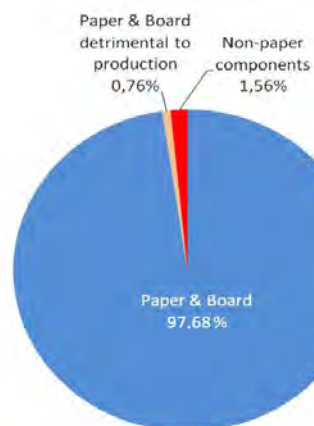
Population (%) covered by type of collection (2010)



- Not prepared for big P&B waste producers
- Not prepared for big corrugated boxes



✓ **SOLUTION: Complementary collections**



**Low quantity of unusable materials**



- ✓ Before sorting = grade 1.01 EN643:2001
- ✓ Source separation is the citizens role.
- ✓ Blue bins with narrow lids.
- ✓ Communication campaigns.



- ✓ **Cost parameters:** blue bins, vehicles, collection service costs, other costs.
- ✓ Total collection cost = **70–90 €/ton**
- ✓ Material goes directly to the **traditional recovered paper plant** (no sorting from other materials)



Source: *Recomendaciones para el diseño de un servicio de recogida selectiva monomaterial de papel y cartón en contenedor* ([www.aspapel.es](http://www.aspapel.es))



**"Real" separate collection: a matter of costs, quality, and collection volumes.**



# THANK YOU

**David Barrio**

**[d.barrio@aspapel.es](mailto:d.barrio@aspapel.es)**

**[www.tupapelesimportante.com](http://www.tupapelesimportante.com)**

**[www.aspapel.es](http://www.aspapel.es)**